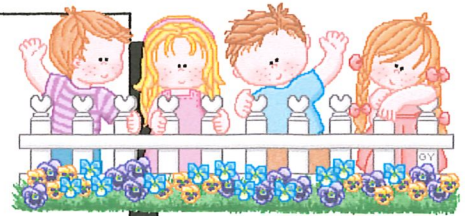


Calvary Cares Newsletter August 2016



1 John 3:18 "Let us not love with words or tongue but with actions and in truth"

Dear Parents & Caregivers,

The end of the summer is near, and we are gearing up for our Prep Week August 29- Sept. 2. Teachers will be working hard to get the school and your child's class ready for our 2016-2017 school year as well as renewing our CPR & First Aid training.

Though the school will be closed for your child/ren during this week, the office will be open if you need to make your tuition payment for the month. Please call the school first to make sure that staff will be available to accept your payment. We will be running errands, coming in & leaving earlier each day.

Flyers are attached to this newsletter regarding our upcoming field trip/activity, curriculum fees and the pre-order for our new school T-shirts. Please make sure to read and make payments accordingly. T-shirt orders are due before break, by Friday August 26th, we will be placing orders during prep week. The curriculum & field trip activity fees are due no later than Sept 9th.

Thank you so much for a great school year and we look forward to another terrific year to come. God bless you & your ohana.

As always if you have any questions or concerns, please feel free to speak to me in person or call me on our school phone.

Much ALOHA,
Teacher Kathy
Director



Calvary Child Care
Center
Honolulu, Hawaii
96819
PH# (808) 834-5728



Happy Birthday

Annabella- 5
August 20

Arielle - 3
August 20

Jessariah - 3
August 23

Mizuki-4
August 26

Teacher Shantel
August 26



**SCHOOL
SUPPLIES
DUE
Sept 6
TUESDAY
1st Day of
School**



Holidays / Breaks- NO SCHOOL



(Friday) August 19
Statehood Day-CLOSED

(Mon-Fri) Aug 29 - Sept 2
School Prep Week-CLOSED

(Monday) September 5
Labor Day Holiday- CLOSED

Donations Needed:

Prep week is upon us and our Parent, Teacher & Church Prep day is on August 27 @8am-12 noon.

We are asking for volunteers to help wipe down and scrub toys & equipment and donations of cleaning supplies or \$\$ toward purchasing supplies and food for volunteers.

If you would like to donate, sign ups will be on the clipboards in our front room! Thank you in advance for your time and donations!

Any questions, please see Teacher Kathy!

IN TRIP/ ACTIVITY DAYS

**LAST
WATER PLAY DAY**
(Friday) Aug. 12



**Parent/ Teacher /Church
Workday**

(Saturday) August 27
8 a.m. - 12 noon

Continental Breakfast & snacks
provided

Sign ups posted soon!

